



St. John Monthly Journal

Called through the Gospel to meet the changing and diverse needs of all people through Worship, Learning, Fellowship, Outreach and Service.

February 2012

Vol. 22 No. 2

IN THIS MONTH'S JOURNAL

| | |
|----------------------------------------|----------|
| PASTOR | 1 |
| <i>ST. JOHN'S GOT TALENT</i> | |
| WOMEN OF THE ELCA | 2 |
| JEN'S JOURNEY | 3 |
| YOUTH MINISTRY..... | 5 |
| WORSHIP TEAM..... | 7 |
| HOMEBOUND & SHUT-IN..... | 7 |
| BIRTHDAY & ANNIVERSARY..... | 8 |
| FEBRUARY 2012 CALENDAR..... | 9 |

St. John's Got Talent

On February 19, 2012, St. John will host a talent show in the Activity Center beginning at 7:00 p.m. Snacks and drinks will be served and a free-will offering will be taken to support the youth trip to New Orleans. If you have a talent you would like to display before the assembly, please indicate soon the back of the Welcome to St. John form or contact either Martin Young or Loren Waa. We will accept musical offerings of any kind (solos, duets, trios, quartets, etc.), instrumental or vocal, magic acts, skits, dramatic (or not so dramatic) readings, magic acts, comedians, etc. If you ever wanted to perform in front of a crowd, this is your chance. A rehearsal for the show will be held on February 18. More information will become available weekly.

Grace and Peace from God our Father and our Lord Jesus Christ.

February 22nd we begin the Season of Lent. One of the touchstones of Lent is a unique series of sermons at mid-week worship. In the past we have walked a labyrinth; prayed using Lutheran Prayer Beads; had a conversation with God; explored the CARROT model of prayer; and a variety of other themes. Some have been exciting...some a disappointment, but Mid-Week Worship during Lent is a special opportunity to STOP, LISTEN, and BE RENEWED.

This year a pre-Lenten Prayer Vigil is being planned for Ash Wednesday. You can read more about this in this edition of the St. John Journal.

The theme I will follow is one of particular interest to me and I hope will be for you too. As you know, I attended Seminary at the Lutheran School of Theology in Mount Airy a neighbor in northwest Philadelphia. During colonial times Philadelphia was the epicenter of Lutheranism in North America and my seminary proudly traced its roots back to Henry Melchoir Muhlenberg and numerous immigrants from Germany, Sweden, Finland, and Denmark. I spoke to a classmate recently who is serving a parish in Delaware that was founded in 1787. He told me that his parish had experienced only 40 years of vacancy its 225 year history. A couple of years ago, Margaret and I visited the oldest continually worshipping Lutheran Church in this hemisphere Frederick Evangelical Lutheran Church, located in Charlotte Amalie, St. Thomas Virgin Island. That congregation was founded by Danes in 1666.

Lutheran make up a very small segment of the population in kentuckiana, but our contribution to America has been and will continue to be disproportional to our

numbers. It is tempting to only look to the future, but knowing our heritage and history can be valuable. Lutheran have had to deal with a multitude of issues and challenges since arriving in north America and perhaps know where we've been, what we overcome, and what we have accomplished might help use deal with the unknown that lies before us.

I want to take you on a journey this Lent as we learn about Lutherans in North America.

- Week One – Feb 29th
The Church's Infancy
- Week Two – March 7
Aliens become Americans
- Week Three – March 14
Our History – Members Share their Stories
- Week Four – March 21
The Frontier
- Week Five – March 28
Coming of Age
- Week Six – April 4
Lutheran Mergers, Schisms and Future

The 3rd Week of Lent, I invite you to think about "your history". If you grew up at St. John come prepared to share remembrances from our 6 decades of history. If you came here from some other Lutheran community tell us about that. This Faith Community is the composite of many different traditions and one of our greatest strengths is our diverse experience of God's love and Grace.

The Lutheran experience in North America has been special. Did you know, for example, that the first president of the Constitutional Assembly in Philadelphia was a Lutheran?

See you in Church,
Pastor Young

Women of the Evangelical Lutheran Church in America



MORNING BIBLE STUDY

Great Figures of the New Testament

Monday, February 6 at 10:00 a.m., in Diehl Hall, Lecture 3, the Virgin Mary
Monday, February 13 at 10:00 a.m. in Diehl Hall, Lecture 4, Joseph, Magi, and Shepherds.

We welcome all to come and share in this experience (men are welcome to come). It is a different way to have Bible Study. We start promptly at 10:00 a.m., have a one-half hour lecture and then discussion. Although this is a W/ELCA sponsored event, men are also invited to attend.

Saturday, February 4th - 10:00 a.m. to 2:00 p.m. - Diehl Hall

We will be making Valentines for our homebound and for Veterans Hospital. All are welcome. Lunch will be served at noon.

Monday - March 5 - 11:30 a.m. - Diehl Hall

General Meeting and Lunch (following Bible Study)

All are welcome to join us on Monday, March 5th at 11:30 a.m. for lunch. We will have a special guest speaker. As always, everyone is invited to attend.

World Day of Prayer - Coming together to "Let Justice Prevail"

Friday, March 2nd - 9:30 a.m.
Christ Church United Methodist on Brownsboro Road.

The theme, "Let Justice Prevail," is inspired by the guiding principles of the WDP movement. At the writers from Malaysia state, "We affirm that we are Christian neighbors in a multi-religious world. The women of Malaysia ask us to come together as worshipping communities to think about justice and how we may approach it in an interfaith world. World Day of Prayer is celebrated all over the world and is an opportunity for St. John members to meet with and celebrate this day with other Christian denominations in our area. The program this year will begin promptly at 9:30 a.m. We are asked to bring canned goods for Dare to Care. Mary Stultz has been our representative to the meetings. Thanks Mary.

Lenten Dinners

We will begin Lenten dinners on Leap Day - February 29th. All begin at 6:30 p.m. sharp. Also dates are March 7th, 14th, 21st and 28th. Watch the bulletin for what to bring.

Spring Cleaning Reminder

Although we haven't set the date yet, just a reminder when doing spring cleaning that we will be have a yard sale again this year (probably the first part of June). This is a joint effort between the Youth and W/ELCA.

W/ELCA 2012 CALENDAR

February 2012

2nd - 7:00 p.m. - Board Meeting

4th - Valentines - Diehl Hall

March 2012

1st - Board Meeting

5th - 11:30 - Diehl Hall - Meeting with speaker

April 2012

5th 7:00 p.m. - Board Meeting

May 2012

10th - 7:00 p.m. - Board Meeting

May 18th - 6:30 p.m. Mother/Daughter Banquet

We will need Activity center for the whole day as well as the kitchen for Thursday and Friday.

June 2012

Board Meeting and Yard Sale - date to be determined, we are hoping for the 9th- details to be worked out

July 2012

5th - 7:00 p.m. Board Meeting

September 2012

6th - 7:00 p.m. - Board Meeting

10th- 7:00 p.m. - General Meeting - Diehl Hall

October 2012

4th - 7:00 p.m. Board Meeting

21st W/ELCA Sunday - both services

November 2012

1st - 7:00 p.m. - Board Meeting

9th - after Friends School closes - Activity Center - prepare for Craft Fair

10th- Craft Fair all day - Activity Center

December 2012

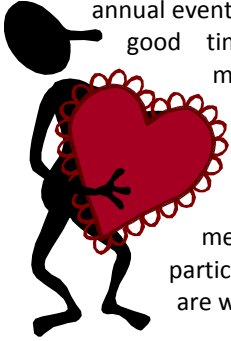
6th - Board Meeting

10th - Christmas Celebration - this may be changed, but I will let you know early enough for revision

Board Meetings are in the same room

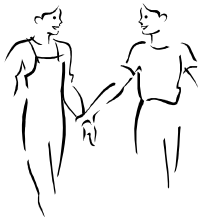
**ANNUAL
VALENTINE CARDS & LUNCH**

Please join us for making Valentines for our shut-in's and veterans hospital. This annual event has become such a good time for not only making Valentines , but for fellowship and meeting new people. We also have some faithful men who come and participate each year. All are welcome to join us.



STOP & LOOK AROUND

Take a moment and look around. Is there someone (or a family) who you usually talk to or see but are not here and/or have not been here in a while? Why not call them today or call them during the week? Let them know they are missed! Everyone likes to know that he/she is missed and that you/we care about them. If this person is ill or needs our help, please contact the Church office. Thank you!



The Evangelism Team

NEW YEAR PRAYER

BY LORRAINE BEYER

Help us, hear us,
Lord be near us,
In thy holy name I pray.

Help us, heal us,
Lord conceal us
From the evil one each day.

Keep us in your holy presence,
May all evil flee away.

Thank you father
Thank you Jesus
Holy Spirit, guide our way.

JEN'S JOURNEY

The past two weeks have been a whirlwind! I started my CPE unit on January 4. I am a chaplain intern at Rush University Medical Center until mid-March. Orientation weeks were busy - with lots of information to learn! There are three of us in this unit, and we spent a lot of time getting to know each other and our supervisor. We also chose our units. Mine is 1/2 of a floor with general medical/surgical patients. Mostly in the afternoons, we go to our floors and talk with patients and staff. Last Sunday, many units in the old hospital moved to the new hospital. It was definitely a unique experience! We were there simply as support, if anyone needed us. Last Tuesday night, I was on my first on-call. On-call means you are in charge of the pager, and taking care of (or referring) any pages that come through from 8:30 one morning to 8:30 the next morning. I shadowed one of the staff chaplains. I learned a lot and hopefully got somewhat prepared for my solo on-call...which is tonight, January 16. Tune in next month for another update (or check my blog - I try to keep it somewhat updated)!

In Christ,
Jen Stanfield
<http://jens-seminary-journey.blogspot.com/>

RESOURCES FOR LENT



Last year as we began Lent we made Lutheran Prayer Beads. At the beginning of Confirmation Class this year our kids made a set to assist them in learning the Catechism.

Well, it's Lent again and if you haven't been using the beads your made last year, dig them out of the draw and get to it. If you lost, misplaced, or gave away your Praying the Small Catechism Book, there will be some available in the Gathering Area. If you need beads, we can check to see if Margi Hahn would be able to assist a new group of crafters.



Rush University Medical Center

COME AND SEE

In a recent sermon, Pastor Young talked about the exchange between Phillip and Nathanael found in the Gospel of John. Jesus asked Phillip to follow him into his ministry and in turn Phillip invited Nathanael to come follow Jesus as well. When Nathanael talked Phillip urged him to "come and see". He didn't invite him to come and worship or to come and contribute; he just asked him to come and see for himself what following Jesus can be.

Pastor challenged all of us to come and see also. Come and see God's grace and power through study and fellowships and ask other to come also.

The W/ELCA retreat, to be held at the Kordes Center in Ferdinand, Indiana on September 28-30, 2012 could be a wonderful opportunity for the women of St. John and for their friends and neighbors to gather for spiritual renewal through study, meditation, prayer and fellowship. Mark your calendars; invite a friend, come and see!

Our congregation, along with 12 other St. Matthews Churches is a part of the St. Matthews area ministry. Our yearly pledge of financial support and our donations provide help for countless people in need. This year, for instance, more than 2000 received food from the pantry, more than 200 attended counseling sessions to help them through difficult life transitions, and more than 100 were helped with utility bills.

As one of the St. John representatives on the St. Mam Board of Directors, I am proud of your compassionate help. I am grateful for Mona and Cliff Thevenin faithful delivery of food donations to the St. Man pantry and for the people who volunteer in the office and serve as Board members.

If you are looking for other ways to help, the early essentials for infants and toddlers needs new or gently used clothing; especially in toddler size. The food panty needs additional volunteers; especially on Thursday and the Meals on Wheels program could use substitute drivers.

Thank you for your generosity and prayers.

Connie Schumacher



THE SOUTH CENTRAL CONFERENCE OF THE INDIANA-KENTUCKY SYNOD

Picnics, gatherings at Louisville Bats ball games, and group cruises on the Belle of Louisville are all some of the fun social events that the South Central Conference has sponsored in recent years.

But potentially the most significant and long-lasting activity has been the sponsorship of over eighty of our high school age youth to attend the Lutheran Youth Gatherings in New Orleans. Over fifty attended the gathering three years ago, and about forty will be attending this year. The South Central Conference has given them major assistance with the costs of transportation to and from the gatherings. This investment in the future leaders of our churches will reap dividends for many years to come.

With the youth of our conference in mind, the conference has hired a part-time Youth Coordinator to assist all of our congregations with activities and programs to serve our young people. So far as we know, ours is the first conference to employ a Youth Coordinator in the Indiana-Kentucky Synod.

The South Central Conference has also sponsored many educational programs over the years. The most recent of which included presentations on the use of Jesse Trees in congregational and family faith lives, and a formal seminar on planning for issues facing those in the later stages of their life journey.

The activities of the South Central Conference are overseen by the South Central Conference Council. The members of the Council are elected or appointed to that position, and represent the members of the conference congregations. The Conference and the Conference Council are mandated by the constitution of the Indiana-Kentucky Synod, which states that its purpose is "to foster interdependent relationships among congregations, institutions, and synodical and church-wide units for mission purposes." The conference budget is approved each year at the Fall Assembly, and is supported by donations from each congregation, based on reported baptized membership.

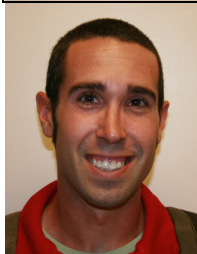
In addition to sponsoring conference-wide events, the South Central Conference also supports Campus Ministries at the University of Kentucky as well as the Louisville Metropolitan Housing Commission, which works for equitable housing opportunities for people in the Louisville area.

The South Central Conference is one of the ways in which we Lutherans, as a minority group in our area, can support each other and present a positive "face of Lutheranism" to our communities. Please watch for activities that will be sponsored in the coming months and years.

Jim Lillie,
South Central Conference Council Chair

St. Matthews Area Ministries
"Pulling Together"

YOUTH MINISTRY & CHRISTIAN EDUCATION



Happy February

2012 is off to a fantastic start and isn't about to slow down any time soon.

Numerous opportunities for Youth Ministry abound as this New Year kicks off. Programs for our youth and our fellow Lutheran Church youth are in the works. I have even managed to build a calendar of events for this first half of the year!

During the past month Laura Cox and I spent a weekend with 250 Middle School students at Youth Quake in Cincinnati. Coming up soon is a trip to Perfect North with Ascension Lutheran, and the 8th Annual South Central Conference Broomball Extravaganza at Iceland.

I look forward as this year will continue to roll by, watching the youth take on new responsibilities, learn to minister to one another, and grow together in faith and friendship.

Paoli Ski Trip

Hopefully there will be colder weather and snow come February. The first Saturday of the month we are planning to go to the ski hill at Paoli with youth from the South Central Conference. Skiing, and Snowboarding – The Price of lift tickets and Rentals is \$50.

Vacation Bible School 2012

Planning Meeting Feb 12, 2012

It hasn't been much of a winter, I expect it will be a nice spring, and then it is SUMMER. It is time to start planning for the 2012 week of Vacation Bible School.

After the second service all those interested in helping with the program there will be information and lunch provided.

Cincinnati Youth Quake

January 13th – 15th

So then, just as you received Christ Jesus as Lord, continue to live your lives in him, rooted and built up in him, strengthened in the faith as you were taught, and overflowing with thankfulness.

-Colossians 2:6-7

Rooted was the theme for the weekend. St. John sent five middle school youth along with me and Laura Cox to chaperone. Our annual trip to Cincinnati was spent at the Holiday Inn Eastgate with over 250 middle schoolers singing and praising God. The weekend was filled with music from Captive Free East Lakes, Daniels Window and the speaker was Celia Whitler.

Broomball Day

8th Annual South Central Conference

Broomball Extravaganza

Friday February 17, 2012

Broomball 10 pm – midnight - Iceland

Cost: \$10 per person

Lock-In to Follow at St. John

ELCA National Youth Gathering

The youth are preparing for the 2012 Youth Gathering which will be held next summer in New Orleans. St. John youth and adults are working with other Lutheran churches from the South Central Conference to organize the trip. Every month we are meeting together to plan, share, and prepare for this most exciting event which only occurs every three years

New Orleans Fundraising

Thanks to all of those who purchased Christmas poinsettias and Christmas earrings from the youth this past month. We raised nearly \$400.

In February and March the youth will be helping to assist with two different events to fundraise for their summer trip.

February 19th – St. John will host a talent show in the Activity Center beginning at

7:00 p.m. Snacks and drinks will be served and a free-will offering will be taken to support the youth trip to New Orleans. If you have a talent you would like to display before the assembly, please indicate so on the back of the Welcome to St. John form or contact either Martin Young or Loren Waa. We will accept musical offerings of any kind (solos, duets, trios, quartets, etc.), instrumental or vocal, magic acts, skits, dramatic (or not so dramatic) readings, magic acts, comedians, etc. If you ever wanted to perform in front of a crowd, this is your chance. A rehearsal for the show will be held on February 18th.

March 10th – TRIVIA NIGHT

Come ONE, Come ALL!!!

St. John Lutheran Church.

901 Breckenridge Lane

Louisville, KY 40207

Doors open at 5:30 p.m.

Trivia starts at 6:30 p.m.

Tables of 8 are \$120 each

Call 7 of your smartest friends and test your Pop Trivia knowledge against other teams for fun and prizes. We only have space for 68 teams so get in early so you have a spot. A great way to test your Pop trivia knowledge, Lutheran trivia night will have Jeopardy style questions with a little Lutheran flair. Sodas and light snacks provided.

If you really want to have some fun, come ready to decorate your own table. There will be prizes for best decorated table. If you want a King Arthur Feast, a Hawaiian Luau or a chance to relive Thanksgiving, bring all the food with you and you can feed your brain while working on the trivia questions. Coolers are highly encouraged (BYOB). There will be 10 rounds of 10 questions with various themes.

Sunday School - Every Sunday 10 – 10:45 AM

Special thanks to all of those who have given their times, talents, and love this year.

Preschool -1st Grade – Margaret Young
2nd Grade – 3rd Grade – Sally McMahon & Jessica Sample
4th Grade – 5th Grade – Martin Young
Middle School – Mark Lynch
High School – Jose Zellers
Kids of the Kingdom – Shawn Hall

Adult Classes

Light on the Lessons (LOL) – Diehl Hall
The New Testament – The Library – Lola Howard

Upcoming Events

February 2012

4th – Paoli Ski Trip
5th – New Orleans Gathering – First Lutheran
5th – Superbowl Party
12th – VBS Planning Meeting - 12 noon
12th – Confirmation Class, 5 – 7:15 pm
17th – Broomball and Lock-In – 10 pm
19th – New Orleans Talent Fundraiser
26th – Confirmation Class, 5 – 7:15 pm

March 2012

10th – Trivia Night Fundraiser-5:30 pm
11th – Confirmation Class, 5 – 7:15 pm
25th – Confirmation Class, 5 – 7:15 pm



2012 Youth Quake – Cincinnati
RJ, Katelyn, Natalie, Martin, Hallie, Tyler, Laura

Worship Team Calendar

| February 2012 | Time | Fifth Sunday After Epiphany February 05, 2012 | Sixth Sunday After Epiphany February 12, 2012 | Transfiguration of our Lord February 19, 2012 | First Sunday in Lent February 26, 2012 |
|-----------------------|-------------|----------------------------------------------------------|----------------------------------------------------------|----------------------------------------------------------|---------------------------------------------------|
| Assisting Ministers | 08:45 | Bob Meyer | Rebecca Dimon | Patti Gray | Betty Pauley |
| | 11:00 | Ruthann Stemler | Lola Howard | Loren Waa | Gloria Wynn |
| Crucifer | 11:00 | Zach Strickland | Chris Filardo | Shelby Mattingly | Amanda Filardo |
| Acolytes | 08:45 | Ellen Goff | Catherine Gettelfinger | Charlotte Gettelfinger | Ellen Goff |
| | 11:00 | Avery Hoskins Meagan Pulford | Avery Hoskins Natalie Lowen | R.J. Perry Tyler Lynch--- | Hallie Stemler Catherine Roth--- |
| Communion Assistants | 08:45 | --- | --- | --- | --- |
| | 11:00 | Rosemary Sample | Don Fugate | Lois Dick | Brenda Painter |
| Lectors | 08:45 | Marlene Klingeman | Bob Meyer | Cathy Meyer | Mike Murray |
| | 11:00 | Betty Meyers | Alice Fugate | Lois Dick | Mary Stultz |
| Altar Guild | 08:45 | Brenda Painter | | | |
| Communion Preparation | 11:00 | Natalie Schultz & Nancy Walsh | | | |
| Ushers | 08:45 | Marlene & Roger Klingeman | Marlene & Roger Klingeman | Pat Pollack & Margie Hahn | Pat Pollack & Margie Hahn |
| | 11:00 | --- | --- | --- | --- |
| Special Events | | | <i>VBS MEETING</i> | <i>St. John's Got Talent</i> | |

Home Bound Members; Happy Birthday and Anniversary information is not available online.

Please check with the Church Office.

FEBRUARY 2012

| Sunday | Monday | Tuesday | Wednesday | Thursday | Friday | Saturday |
|-------------------------------------------------------------------------------------------------------------------------------|-------------------------|-------------------------------------------------------------------------------------------|------------------------------------------------------------------------------------------------------------------------------------------------------------|----------------------------------------------------------------------------------------------------------------------------------------|--------|-----------------------------------------------------------------------------------------------------------------|
| | | | 1 | 2 | 3 | 4 |
| | | | Care & Share 9:45am Bridge Group – DH 6:00pm VDC Reunion Group—Library 7:15pm Worship 8:00pm Chancel Choir Rehearsal | 9:00am Walk & Talk 7:00pm Stewardship #35 | | 10:00am W/ELCA Valentines-DH |
| 5 | 6 | 7 | 8 | 9 | 10 | 11 |
| Care and Share Sunday Epiphany 5 8:45am Worship 10:00am Sunday School 11:00am Worship | 7:00pm Worship & Praise | LCFS #2 | 6:00pm VDC Reunion Group—Library 7:15pm Worship 8:00pm Chancel Choir Rehearsal | 9:00am Walk & Talk 7:00pm Chr. Ed. Meeting--#5 | | |
| 12 | 13 | 14 | 15 | 16 | 17 | 18 |
| Epiphany 6 8:45am Worship 10:00am Sunday School 11:00am Worship 5:00pm Confirmation Class | | LCFS #2 7:00pm Men's Prayer & Fellowship-Library | St. John Journal Deadline 6:00pm Finance Com. Mtg.--Rm. #45 6:00pm VDC Reunion Group—Library 7:15pm Worship 8:00pm Chancel Choir Rehearsal | 9:00am Walk & Talk | | 7:00am VDC Team Meeting -DH, large kitchen, ABC rooms 10:00am Louisville Lutherans Group Activity Center |
| 19 | 20 | 21 | 22 | 23 | 24 | 25 |
| Transfiguration of our Lord 8:45am Worship 10:00am Sunday School 11:00am Worship 6:00pm St. John's Got Talent | | LCFS #2 | Ash Wednesday 6:00pm VDC Reunion Group—Library 7:15pm Worship 8:00pm Chancel Choir Rehearsal | 9:00am Walk & Talk | | |
| 26 | 27 | 28 | 29 | | | |
| First Sunday in Lent 8:45am Worship 10:00am Sunday School 11:00am Worship 5:00pm Confirmation Class | 10:00am Bridge Group DH | LCFS #2 7:00pm Congregation Council—DH 7:00pm Men's Prayer & Fellowship-Library | 6:00pm VDC Reunion Group—Library 6:00pm Lenten Potluck Dinner 7:15pm Worship 8:00pm Chancel Choir Rehearsal | LCFS – Lutheran Child & Family Services VDC – Via de Cristo AC – Activity Center DH – Diehl Hall SCS- Sunday Church School | | |

St. John Lutheran Church

901 Breckenridge Lane
Louisville, KY 40207

Visit us on the Internet <http://www.stjohnlutheranky.org>



NON PROFIT
U.S. POSTAGE
PAID
Louisville, KY
Permit No. 597

February 2012

+Time Sensitive Content – Please Expedite+

CHANGE SERVICE REQUESTED



St. John Journal

*St. John Lutheran Church is a Christ-Centered Community reaching out through
the Gospel to meet the changing and diverse needs of all people*

Worship at St. John
Sunday
8:45 a.m. and 11:00 a.m.

Sunday School
3 year old—Adults 10:00 a.m.

Worship on Wednesday
(WOW)
7:15 p.m.

Church Office Hours
Monday-Friday
9:00 a.m. --- 3:30 p.m.
Closed for Lunch 12:15 p.m.-1:15 p.m.

**Church Telephone
& Fax No.**

Voice: 502-895-9320

Fax: 502-895-3979

E-mail:

stjohn@stjohnlutheranky.org Office
pastor@stjohnlutheranky.org Pastor
youthministry@stjohnlutheranky.org
Director of Youth & Chr. Education

Staff

The Rev. Edward L. Young
Pastor

Mr. Martin E. Young
Director of Youth & Christian Education

Miss Laura Otterback
Administrative Assistant

Dr. Denine LeBlanc
Organist

Mr. Chris Kent
Choir Director

Mr. David Alcorn
Custodian